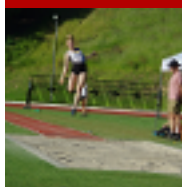




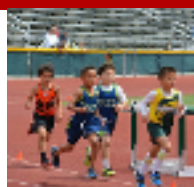
A P R I L 1 3 & 1 4 O X N A R D H I G H S C H O O L



MEET ENTRY

START DATE

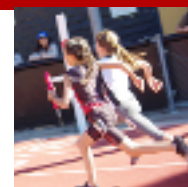
4/1 at 9:00 am



MEET ENTRY

DEADLINE

4/10 at 11:59 pm



This is a seeded meet athletes must be entered by their coach/club rep at their : Athletic.net team page

No Late Entries - No Exceptions but for meet-day relay sub/alternates

Entry Limits: The maximum number of events is: two individual events and one relay or one individual event and two relays----Each club will be allowed three relay teams per age/gender division.

Any Saturday Semi-Final event which has 9 or less will be run as Finals on Saturday

Saturday, April 13 - 8:30 am start

3000m Finals

MG, MB, YG, YB, IG, IB, YW, YM

100/80m Hurdles Semi-Finals*

YM, IB, YB, YW, IG, YG, /MG, MB

100m Semi-Finals* *Semi-Finals front and backside

BG, BB, MG, MB, YG, YB, IG, IB, YW, YM

800m Finals

BG, BB, MG, MB, YG, YB, IG, IB, YW, YM

4x100m Semi-Finals*

BG, BB, MG, MB, YG, YB, IG, IB, YW, YM

200m Finals

BG, BB, MG, MB, YG, YB, IG, IB, YW, YM

Sunday, April 14 - 8:30 am start

1500m Finals

BG, BB, MG, MB, YG, YB, IG, IB, YW, YM

80/100m Hurdles Finals

MG, MB/ YM, IB, YB, YW, IG, YG,

4x100m Finals

BG, BB, MG, MB, YG, YB, IG, IB, YW, YM

400m Finals

BG, BB, MG, MB, YG, YB, IG, IB, YW, YM

100m Finals

BG, BB, MG, MB, YG, YB, IG, IB, YW, YM

200m Hurdles Finals

YG, YB, IG, IB, YW, YM

4x400 Finals

BG, BB, MG, MB, YG, YB, IG, IB, YW, YM

Field Event Schedule

Saturday BB, BG, MG, MB Sunday YB, YG, IG, IB, YW, YM

LONG Jump

SATURDAY

8:30-11:00 BB-Pit 1, MG-Pit 2
11:15-1:45 MB-Pit 1, BG-Pit 2

SUNDAY

8:30-11:00 YB-Pit 1, YG-Pit 2
11:15-1:45 IB/YM-Pit 1, IG/YW-Pit 2

HIGH Jump

SATURDAY

8:30-11:00 MB, MG
11:15-1:45 BB, BG

SUNDAY

8:30-11:00 IB, YM, IG, YW
11:15-1:45 YB, YG

SHOT Put

SATURDAY

8:30-11:00 BG, BB
11:15-1:45 MG, MB

SUNDAY

8:30-11:00 IB, YM, IG, YW
11:15-1:45 YB, YG

Field Events are Open Pit/Timed Format - Athletes are to Start and Finish between hours listed.

There will be no lowering of the bar in high jump.

This meet is open to seeded athletes only in the following age group divisions:

BG/BB (9-10)-MG/MB (11-12)-YG/YB (13-14)-IG/IB (15-16)-YW/YM (17-18)